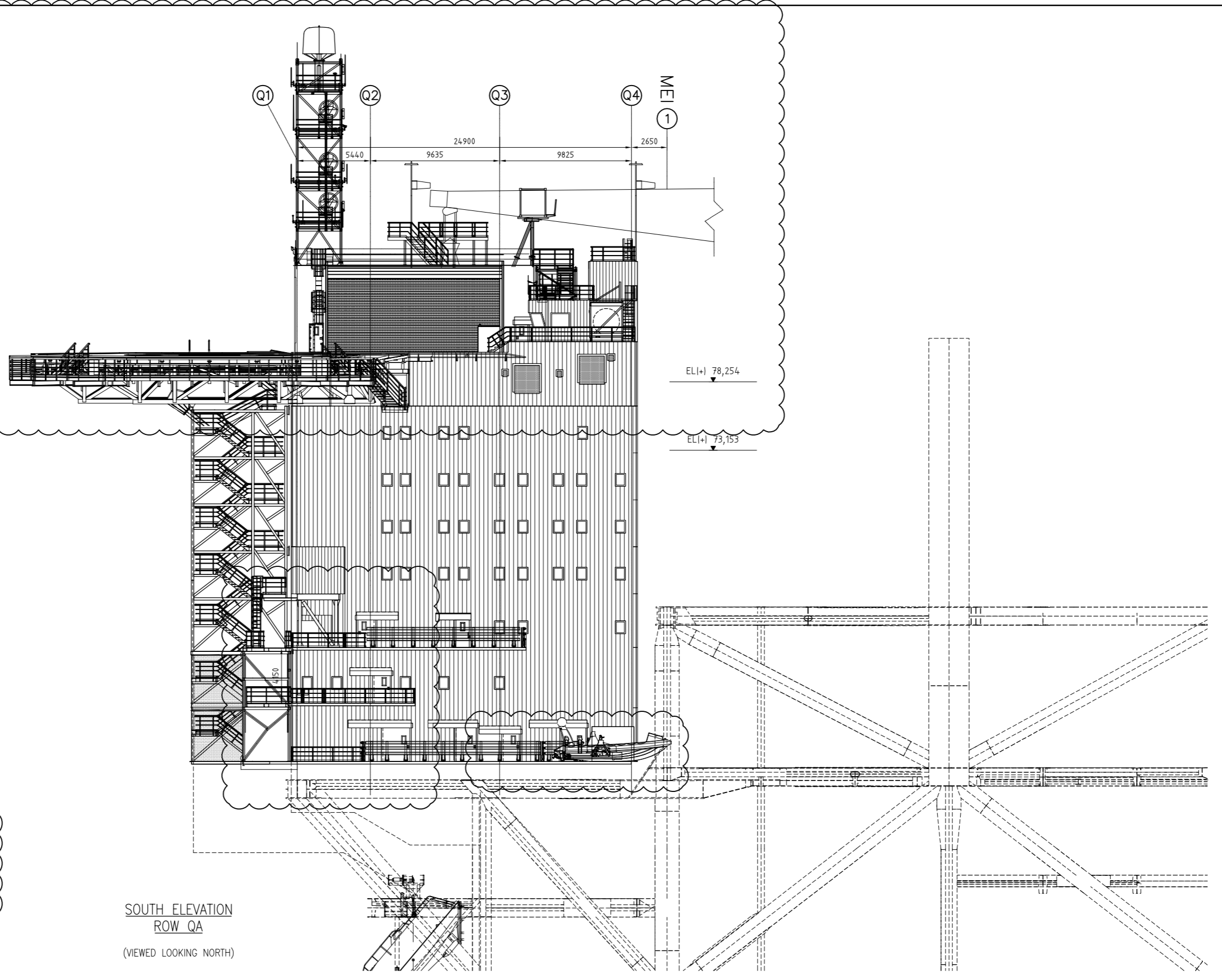


ELI+ 102,400
2280 ANTENA TOWER ELI+ 100,120
3300 ANTENA TOWER ELI+ 96,820
3900 ANTENA TOWER ELI+ 92,920
3000 ANTENA TOWER ELI+ 89,920
LIFT MOTOR ROOM ROOF ELI+ 87,250
3029 HELIHANGER ROOF ELI+ 86,950
3300 STAIR ROOF ELI+ 83,950
300 HTCC ROOF ELI+ 84,750
3500 LEVEL 9 T.O.S ELI+ 80,450
4000 LEVEL 8 T.O.S ELI+ 76,450
3500 LEVEL 7 T.O.S ELI+ 72,950
3500 LEVEL 6 T.O.S ELI+ 69,450
3500 LEVEL 5 T.O.S ELI+ 65,950
3500 LEVEL 4 T.O.S ELI+ 62,450
4000 LEVEL 3 T.O.S ELI+ 58,450
4500 LEVEL 2 T.O.S ELI+ 53,950
4000 LEVEL 1 T.O.S ELI+ 49,950



1  
REV  
APPLICABLE TO ALL REVISION CLOUDS

SOUTH ELEVATION  
ROW QA  
(VIEWED LOOKING NORTH)


REV. No.	DESCRIPTION OF REVISION	ISSUE DATE	MADE BY	CHK'D BY	DISC. APPR.	PROJ. APPR.	CLIENT APPR.	REV. No.	DESCRIPTION OF REVISION	ISSUE DATE	MADE BY	CHK'D BY	DISC. APPR.	PROJ. APPR.	CLIENT APPR.
1	RE-ISSUED TO SUIT DCP 0720-C-221, 497, 448, 490 & 588	11.09.09	R.B	M.W	M.D	A.MA									
0	APPROVED FOR CONSTRUCTION	24.03.09	DR	PK	DH	AMA									
B	ISSUED A.F.D / CLIENT REVIEW	01.08.08	R.B	S.C	D.H	AMA									
A	ISSUED FOR I.D.C	02.06.08	R.B	D.H											

VALHALL RE-DEVELOPMENT  
PROJECT No. C06106



SLP ENGINEERING LTD  
HAMILTON ROAD  
LOWESTOFT  
SUFFOLK, NR32 1XF

REFERENCE DRAWINGS:	DRAWING TITLE:
PH-LP-C- 5301-001 TO 5310 -001	LIVING QUARTERS GA LAYOUT LEVELS 1 TO 10



LIVING QUARTERS  
SOUTH ELEVATION

REGISTRATION CODES			DRAWING NO.				SCALE
AREA	SYSTEM	TYPE	FACILITY CODE	ORIG.	DISP.	SEQ. No.	SHEET
L	00	XX	PH	LP	C	5316	001
							1:150
							REV. 1