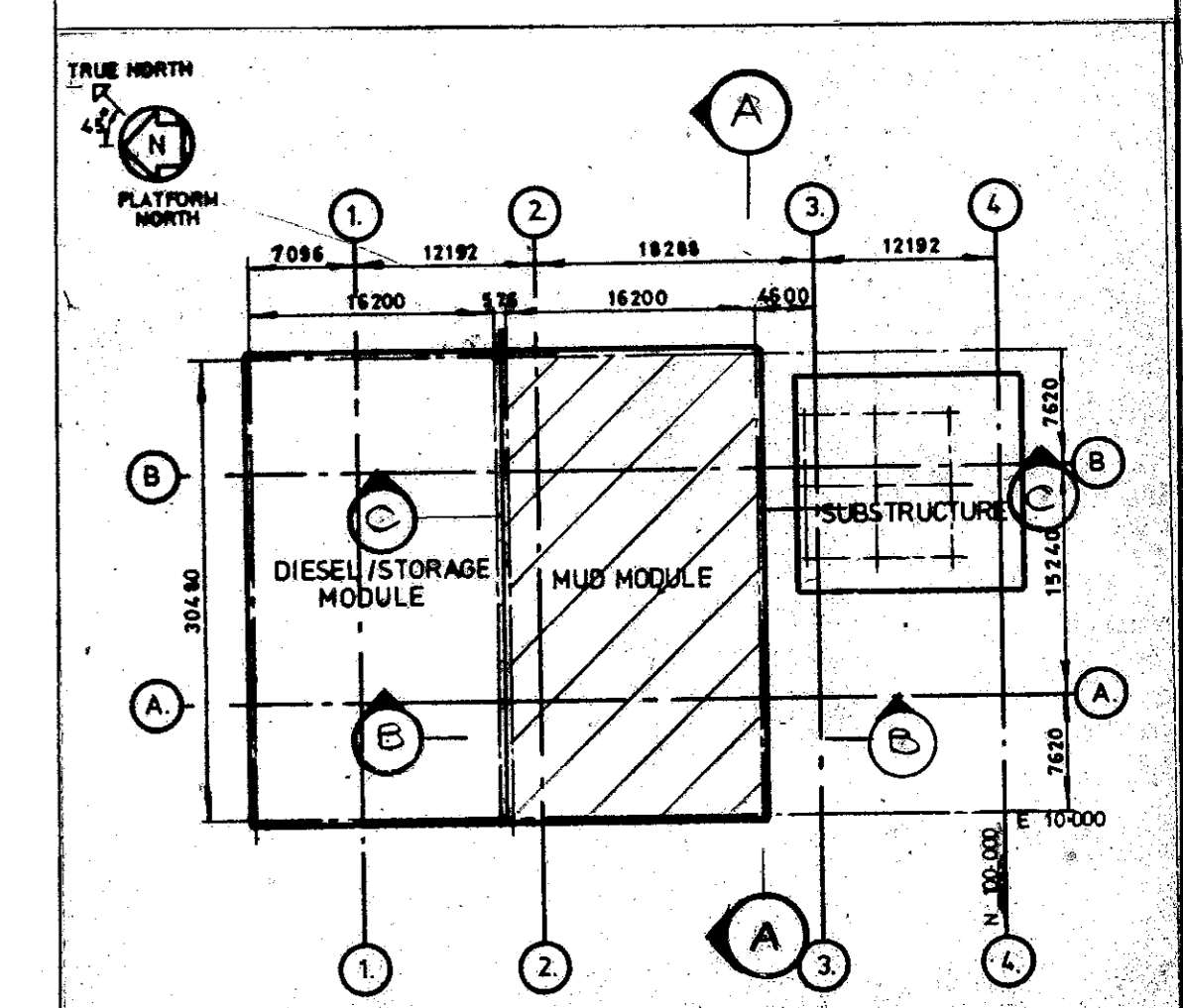


ITEM N°	VENDORS ITEM N°	DESCRIPTION	ELEVATION
4102A&B		MUD PUMPS 1&2	U/S SKID +32147
4102A&B		PRECHARGING PUMPS 1&2	U/S SKID +32147
4104A&B		MUD MIXING PUMPS 1&2	U/S SKID +32167
4105A&B		MUD TRANSFER PUMPS 1&2	U/S SKID +32167
4106A&B		DISCHARGE PUMPS 1&2	U/S SKID +32167
4107		DESANDER PUMP	U/S SKID +32167
4301		DESANDER	U/S SKID +32025
4302A&B		FINE SEPARATORS 1&2	U/S SKID +32025
4303		SHALE SHAKER	U/S SKID +32025
4304A&B		ATMOSPHERIC DEGASSER 1&2	U/S SKID +32025
4305A&B		CENTRIFUGE UNIT 1,2&3	U/S SKID +32025
4402		MUD MIXING UNIT 1,2&3	U/S SKID +32025
5106A&B/C		SURGE TANKS 1,2&3	U/S SKID +36625
5213		COLLECTION MUD CHUTE	U/S SKID +36625
7001A&C		TRANSFORMER 1,2&3	U/S SKID +36600
7002A		SWITCHBOARD D-5A2	U/S SKID +36600
7003		DYNAMIC BRAKE CUBICLE	U/S SKID +36600
7004		BLOWER MOTOR SWITCHBOARD	U/S SKID +36600
7007		SWITCHBOARD D-5B MAIN	U/S SKID +32140
8510		SLAVE PANEL FOR BARYTES	U/S SKID +32140
4312		SEPARATOR	U/S SKID +32132
5227A&B		SOLVENT RESERVOIR TANKS	U/S TANK +33192
5222		SOLVENT MAKE-UP TANK	U/S TANK +34900
		FILLING CHUTE	U/S SKID +32140
4307A&B		CUTTINGS CLEANER VIBRATORS	U/S OF BASE +32147
4121 A&B		CUTTINGS CLEANER PUMPS	U/S OF SKID +32167
4122 A&B		WASH DISCHARGE PUMPS	U/S OF SKID +32167
4952 A&B		CUTTINGS CLEANER DISCHARGE CHUTES	U/S OF TANK +34900
4953		CUTTINGS CLEANER FEED CHUTE	U/S OF TANK +34900
5228		SOLVENT HOLDING TANK	U/S OF TANK +34900
4115A&B		CENTRIFUGE SUPPLY PUMP	U/S SKID +32140
4127		SOLVENT SUBMERSIBLE PUMP	U/S SKID +32144
8505		BULK STORAGE AIR CONVEYING CONTROL CABIN	U/S SKID +32144

REFERENCE DRAWINGS
 MUD MODULE GENERAL ARRG'T OF LOWER DECK
 EL +32132 TOS A1-1-2100-17
 MUD MODULE GENERAL ARRG'T MEZZANINE FLOOR
 EL +36592 TOS A1-1-2100-18
 MUD MODULE GENERAL ARRG'T OF ROOF
 EL +42120 TOS A1-1-2100-19

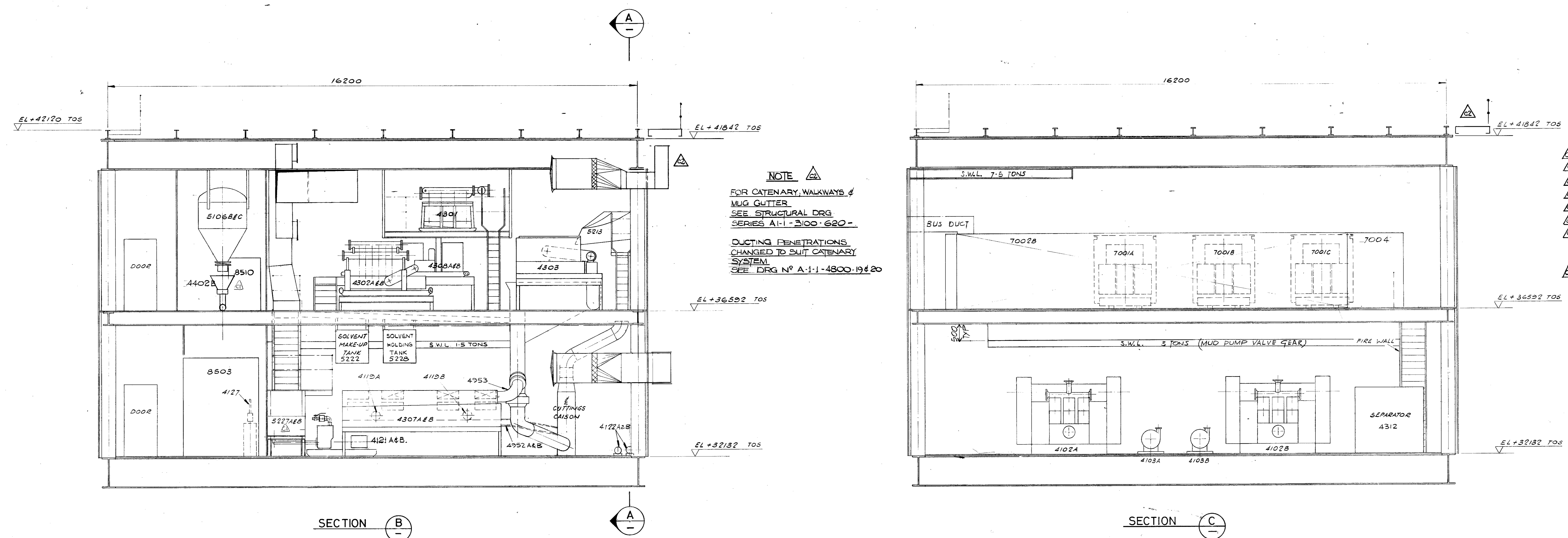


APPROVED FOR ISSUE
 REV. C2 - AMENDMENT FOR CONSTRUCTION
 SIGNED: George M. Harrison DATE: 22/3/79
 R.D.S. *George M. Harrison*
 AMOCO NORWAY *Frank Nord* 5/12/77
 SCALE 1:50
 1000 2000 3000 4000

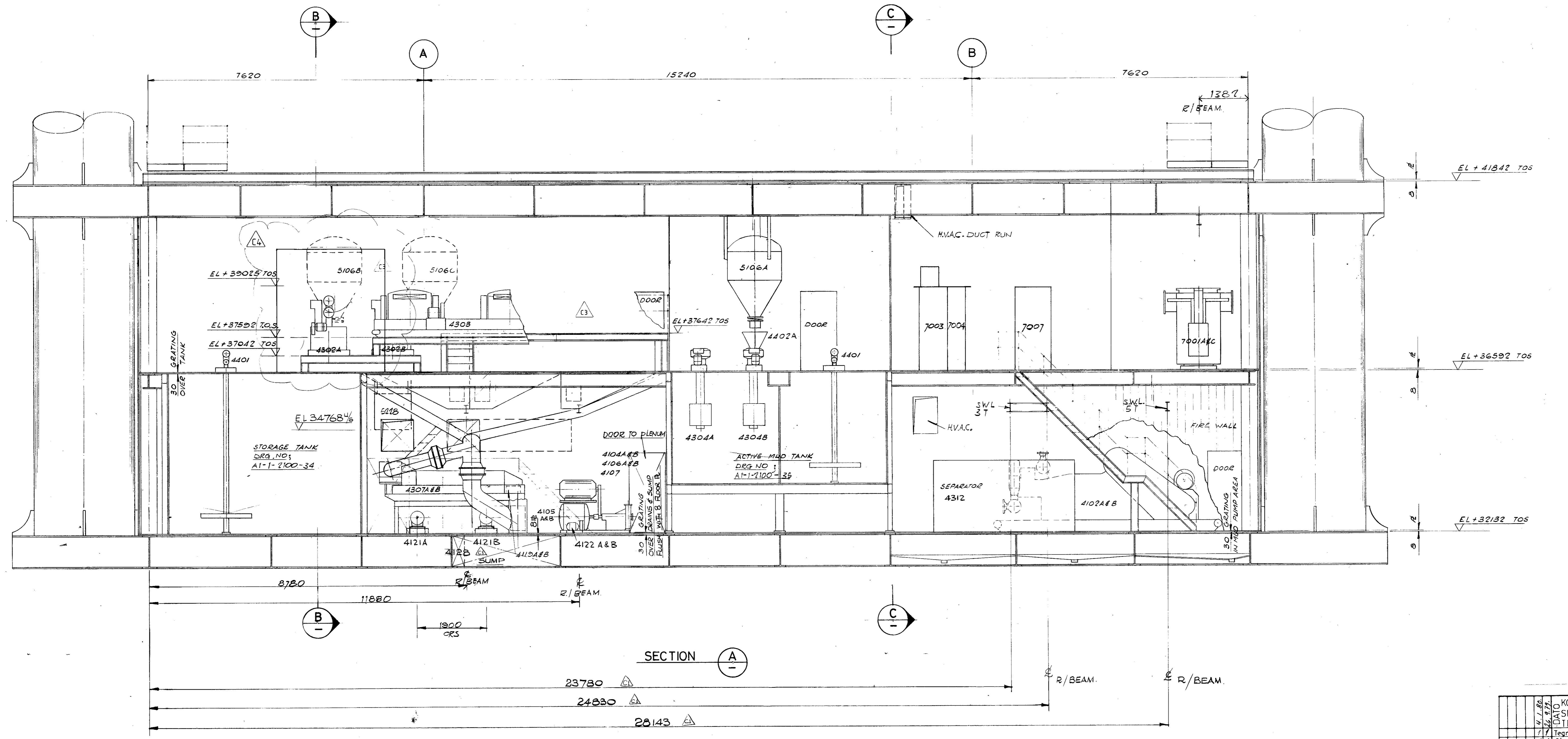
NO.	AMENDMENTS	BY	DATE

RIG DESIGN SERVICES LTD
 CONSULTING ENGINEERS
 4 GREAT PORTLAND STREET, LONDON W1N 5AA, ENGLAND
 TELEPHONE 01-573 8541 TELEFAX 2788 (RIG DESIGN UNIT)

CLIENT: AMOCO
 PROJECT: VALHALL DEVELOPMENT
 TITLE: MUD MODULE SECTIONS A-A, B-B & C-C
 DESIGNED: EDS LTD SCALE: 1:50 DRAWING: A1-1-2100-20
 DRAWN: AH DATE: 23-79 APPROVED: *W.N.W.*
 CHECKED: *W.N.W.* DATE: 22-3-79



NOTE
 FOR CATENARY WALKWAYS & MUG GUTTER SEE STRUCTURAL DRG SERIES A1-1-2100-620-
 DUCTING PENETRATIONS CHANGED TO SUIT CATENARY SYSTEM SEE DRG N° A1-1-4800-19&20



NO.	REVISIONS