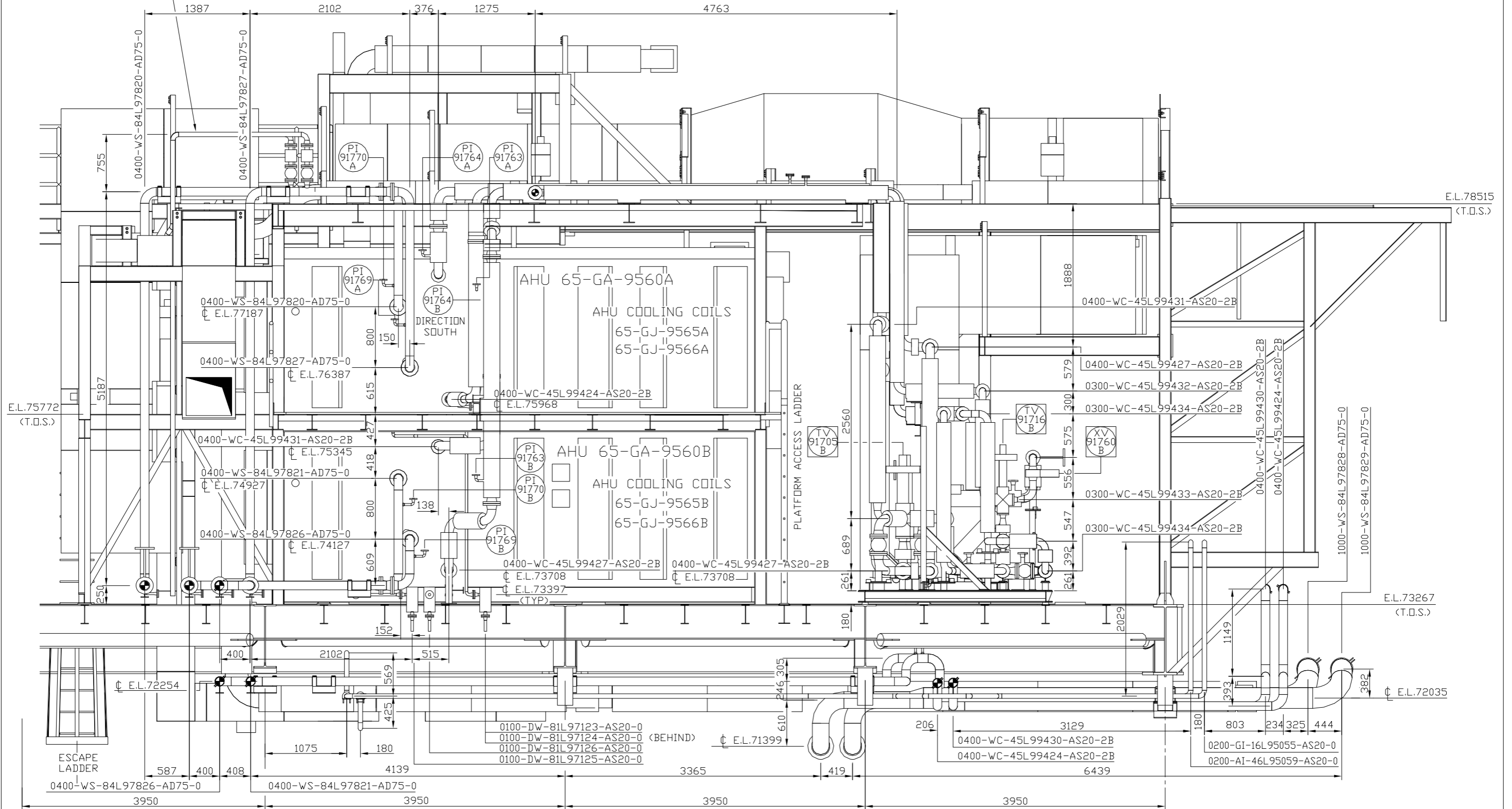


0200-WS-84L97852-AD75-0
 0200-WS-84L97853-AD75-0
 (BEHIND)



REV. No.	DESCRIPTION OF REVISION	ISSUE DATE	MADE BY	CHK'D BY	DISC. APPR.	PROJ. APPR.	CLIENT APPR.	REV. No.	DESCRIPTION OF REVISION	ISSUE DATE	MADE BY	CHK'D BY	DISC. APPR.	PROJ. APPR.	CLIENT APPR.
Z	AS BUILT	05/08/10	IA	RZA	SB	AD									
2	RE-ISSUED IFC TO SUIT DCP-0720-L-2040	25/05/10	GO	PH	SB	AD									
1	RE-ISSUED IFC TO SUIT DCP-0720-L-1890	27/01/10	GO	LB	DED	AD									
0	ISSUED FOR CONSTRUCTION	13/05/09	KRL	GEB	RWJ	DED									
B	ISSUED FOR AFD/CLIENT REVIEW	10/03/09	LM	JM	DD	JS									
A	ISSUED FOR I.D.C.	18/02/09	KM	MC	DD	JS									

VALHALL RE-DEVELOPMENT
 PROJECT No. C06106

SLP ENGINEERING LTD
 HAMILTON ROAD
 LOWESTOFT
 SUFFOLK, NR32 1XF

REFERENCE DRAWINGS:	DRAWING TITLE:
PH-LP-L-4303-001	PFS MODULE PIPING GA CANTILEVER LVL.
PH-LP-L-4304-001	PFS MODULE PIPING GA UPPER LVL.
PH-LP-L-4306-001	PFS MODULE PIPING GA VIEW LOOKING NORTH
PH-LP-L-4350-001	P & ID PFS CHILLER PLANT
PH-LP-L-4353-001	P & ID PFS SEA WATER COOLING

POWER FROM SHORE MODULE
 PIPING GENERAL ARRANGEMENT
 CANTILEVER AREA
 VIEW LOOKING SOUTH

REGISTRATION CODES			DRAWING NO.				SCALE
SYSTEM	TYPE	FACILITY CODE	ORIG.	DISP.	SEQ. No.	SHEET	1:25
M5	45	XD	PH	LP	L 4305	001	Z